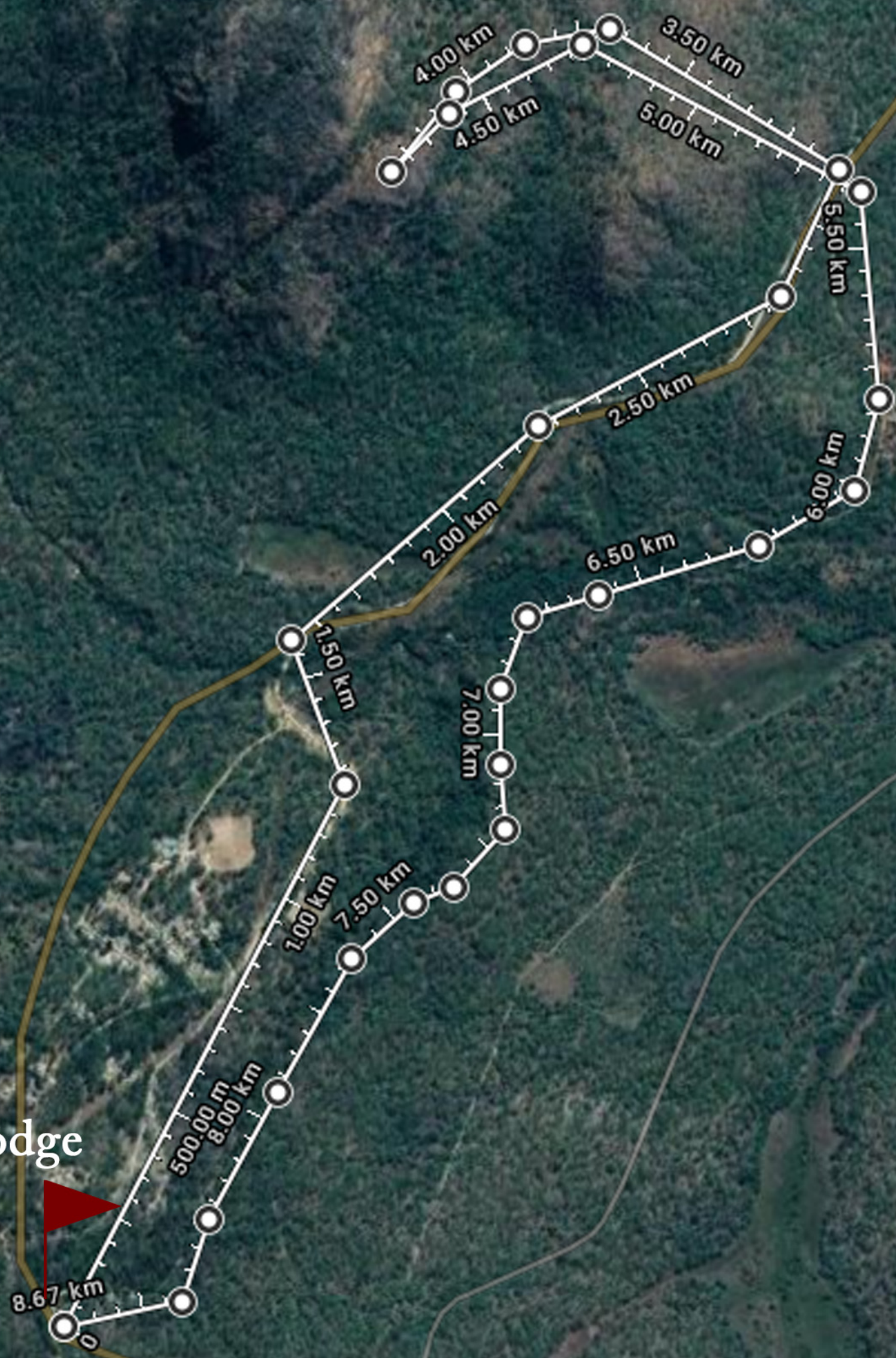


Lodge



# Mtsotsolo Trail

Trail 6

Walking/ Hiking Only

Walking Time: 5 hrs

Difficulty Level: Hard

Shade Cover: 50%

This is a mountain challenge to ascend the Mtsololo peak. From the lodge, walk towards Mtsololo mountain then ascend the peak. On the summit you have superb views of the plains below .



Hiking only with option of sleeping on the mountain. Good viewpoint with possibility of bushpigs sightings early in the morning. Boulder and Mocking cliff chat, Boehms flycatcher, spotted creeper, sterlings woodpecker are common sightings on this mountain trail.

Keep your eyes out as well for the propeller trees.

